

ERSATZTEILE

Pièces de rechange - Onderdelen - Reservedele - Varaosat - Pezzi di ricambio
Reservedelen - Peças - Reservdelar - Piezas de recambio

SPARE PARTS

STROMLAUFPLÄNE

Schéma de connexions - Stroomschema - Kredslobsdiagrammer - KytKentäkaavio
Aansluitschema - Schema elettrico - Koplingskjema - Esquema electrico - Elschema
Esquema eléctrico

CIRCUIT DIAGRAMS

GIS CHAIN HOIST

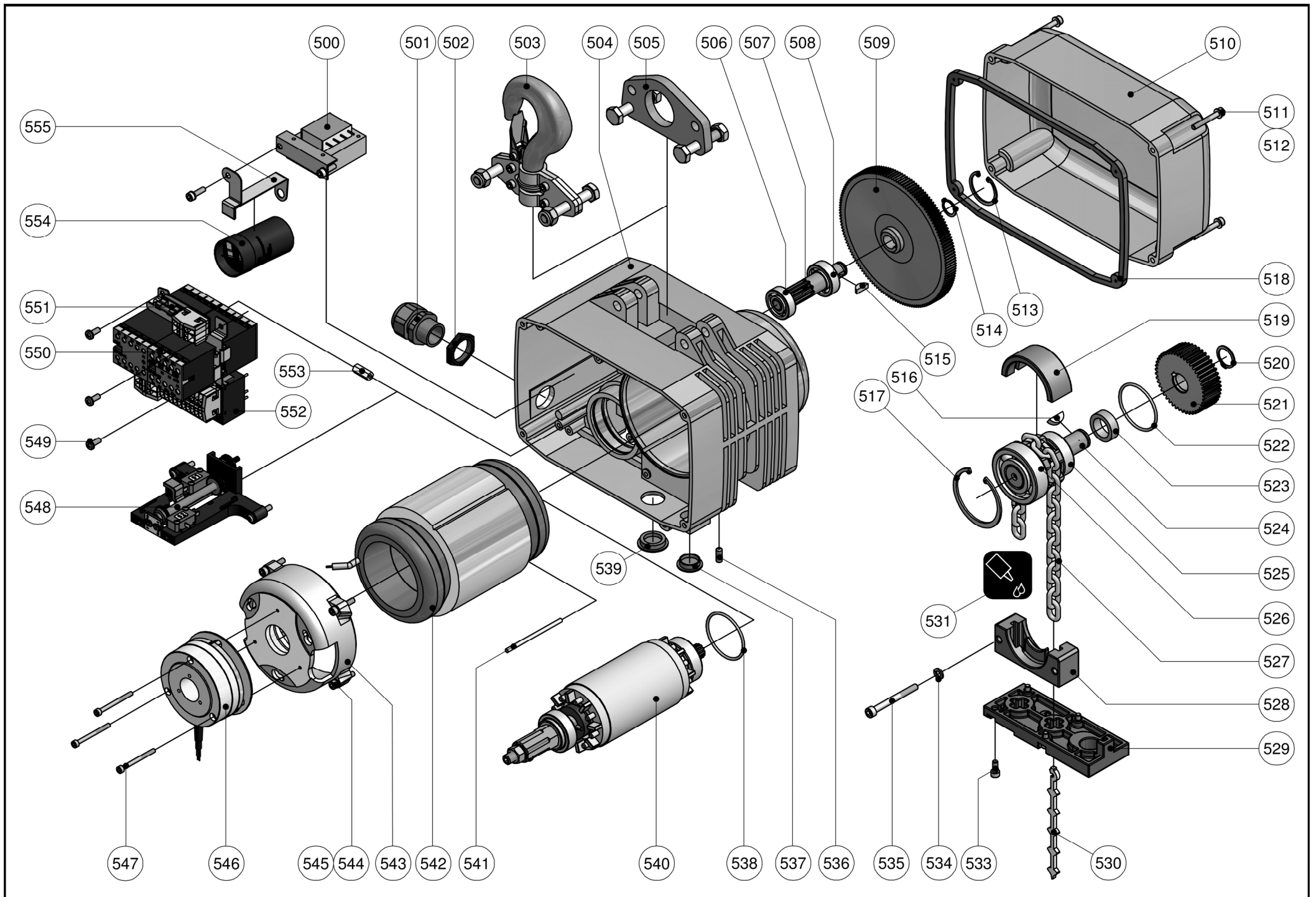
 SWISS QUALITY

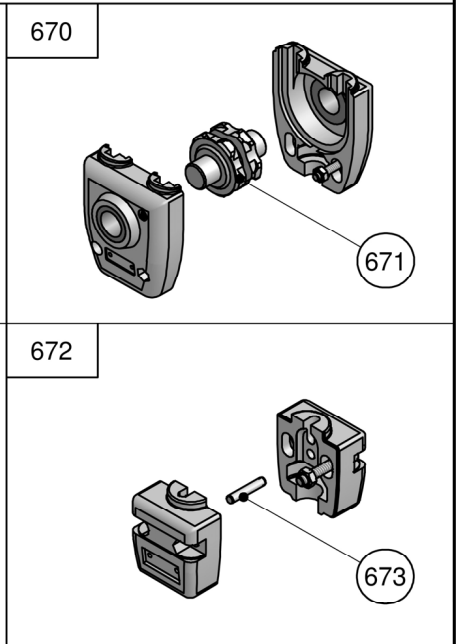
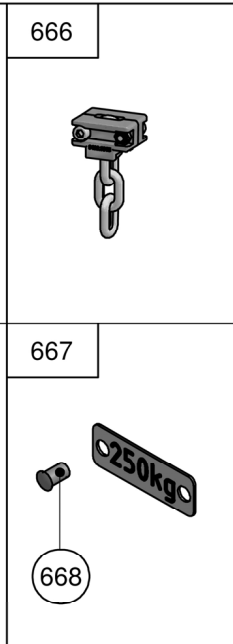
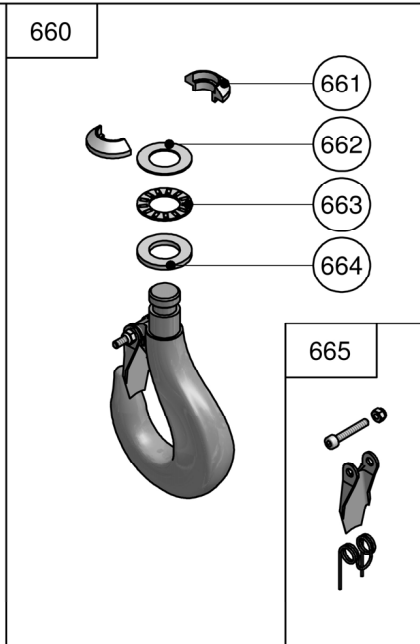
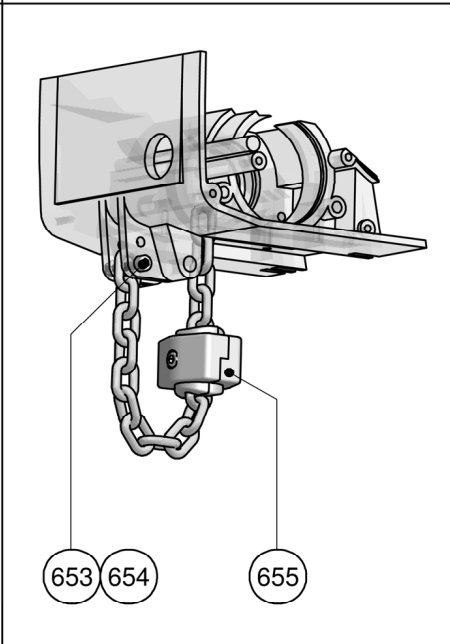
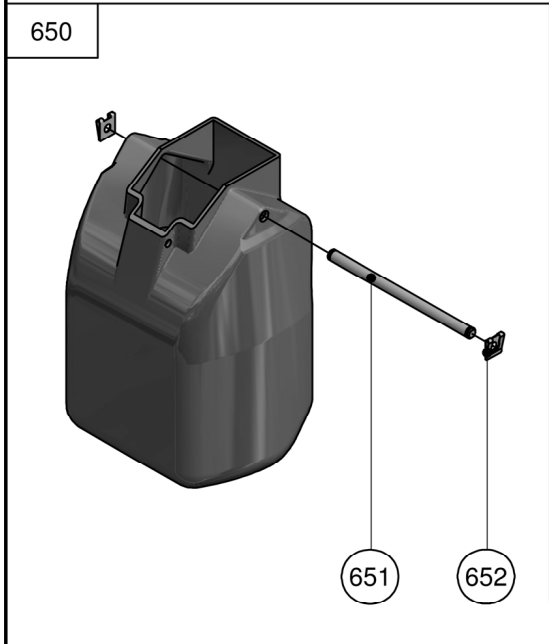
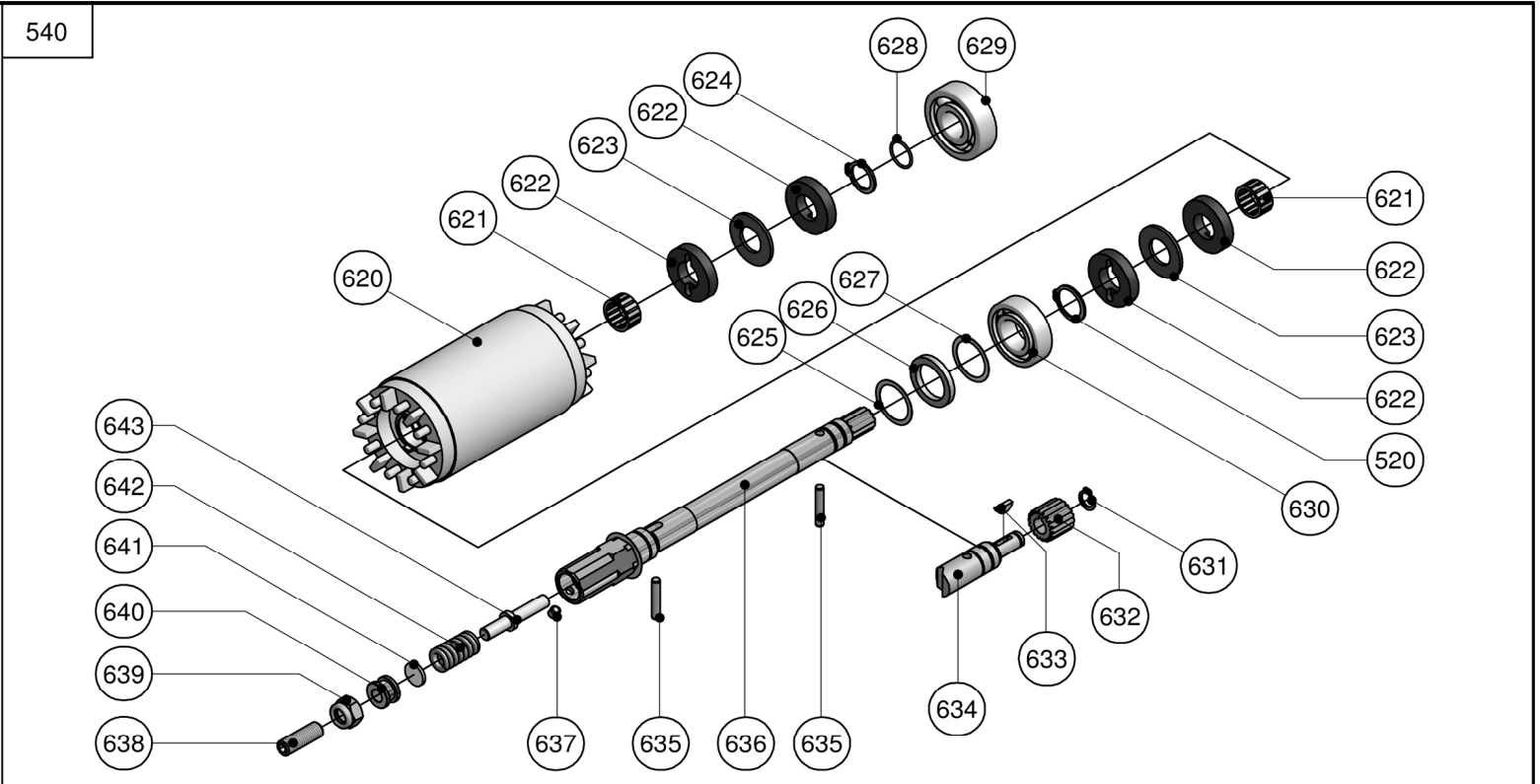
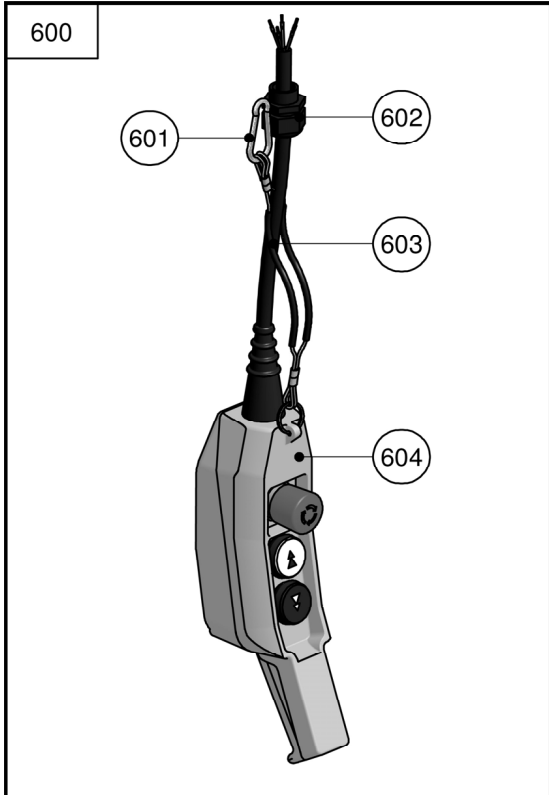
GCH 250
GCH 500



M A D E I N S W I T Z E R L A N D







Elektrokettenzüge - Electric chain hoists - Palans électriques à chaîne

Schützensteuerung
 Contactor control
 Commande par contacteurs

1 Geschwindigkeit mit Not-Aus
 1 speed with emergency stop
 1 vitesse avec marche-arrêt

3 Ph 9401.9500.4

2 Geschwindigkeiten mit Not-Aus
 2 speeds with emergency stop
 2 vitesses avec marche-arrêt

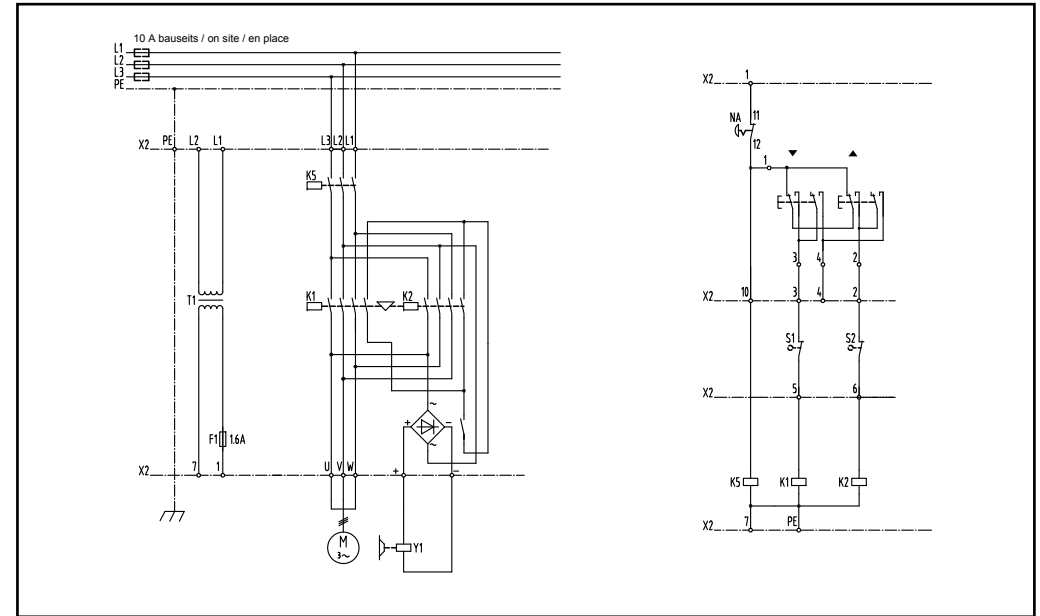
3 Ph 9401.9501.4

1 Geschwindigkeit mit Not-Aus
 1 speed with emergency stop
 1 vitesse avec marche-arrêt

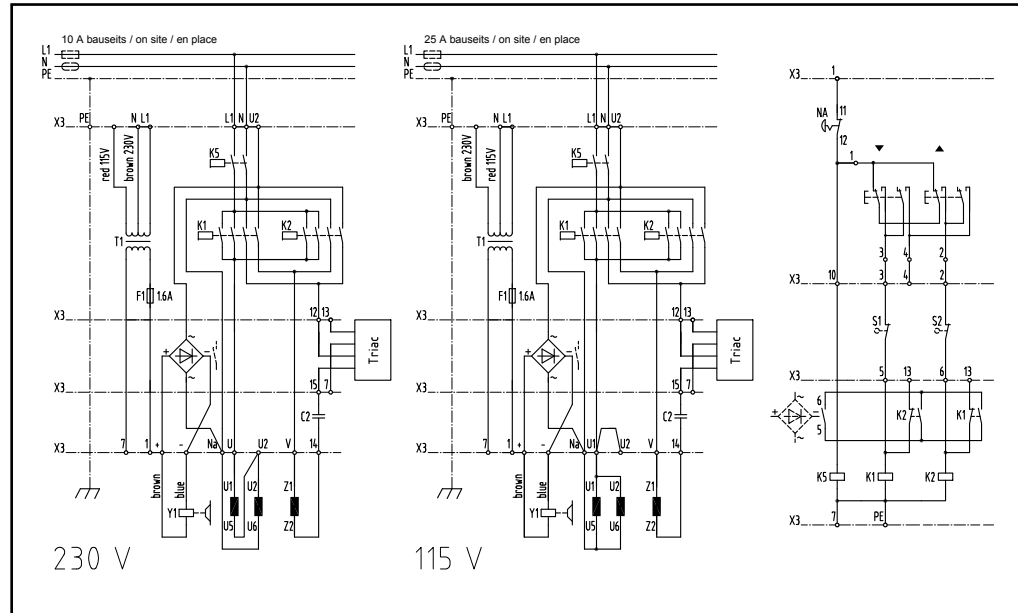
1 Ph 9401.9519.4

| | | | |
|---------|-----------------|----------------|--------------------------|
| F | Steuersicherung | Control fuse | Fusible de commande |
| K | Schütz | Contacteur | Contacteur |
| L | Zuleitung | Power supply | Alimentation électrique |
| N | Nullleiter | Neutral | Neutre |
| NA | Not-Aus | Emergency stop | Marche-arrêt |
| PE | Erdung | Earth | Mise à la terre |
| S | Schalter | Switch | Interrupteur |
| T | Transformator | Transformator | Transformateur |
| U, V, W | Motor | Motor | Moteur |
| X | Klemmenleiste | Terminal strip | Barrette de raccordement |
| Y | Bremse | Brake | Frein |

9401.9500.4 3 Ph



9401.9519.4 1 Ph



9401.9501.4 3 Ph

